

# ***Fantom***

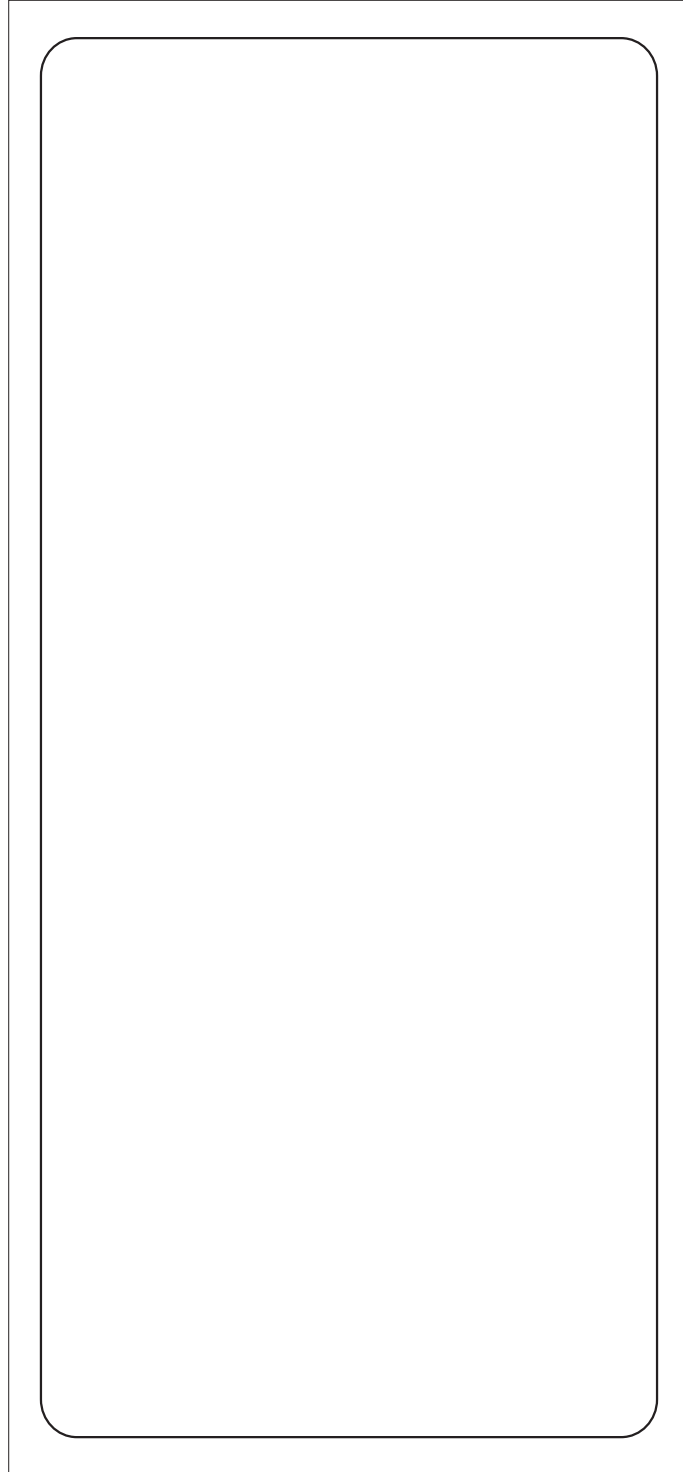
**Poseidon CC 6500  
Mirage CC 6550  
Robotix CC 6300**

**WATER FILTER  
CARPET CLEANER**

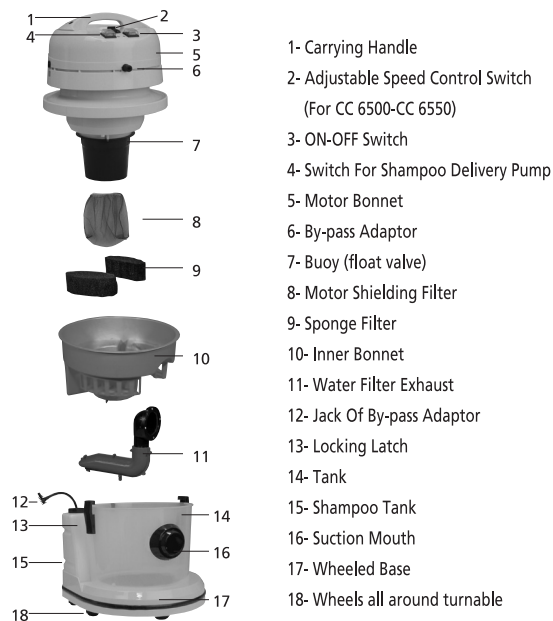


**TYPE W 11-1**

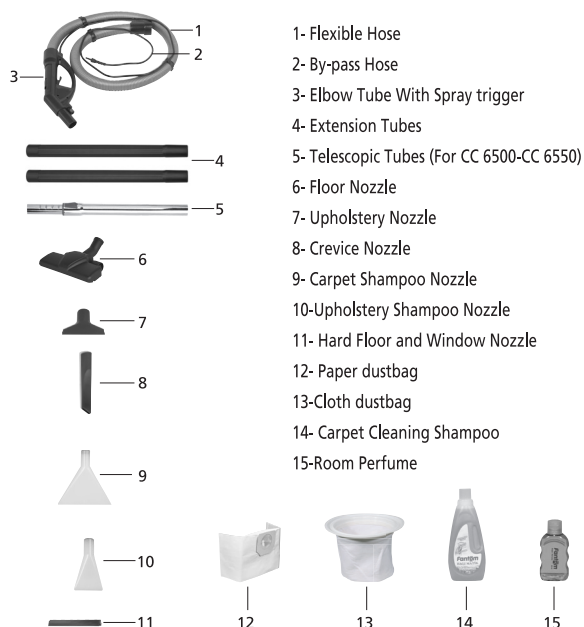
**USER'S GUIDE**



### COMPONENT PARTS



### ACCESSORIES



### PRECAUTIONS (READ BEFORE USING)



- Make sure that the voltage on the power name plate of the device corresponds to the voltage of your network
- Use your machine with the right currency. The plug has to be protected with min. 10 amperes.
- In order not to compromise the safety of the appliance, use only original spare parts and accessories. The warranty is not valid if unsuitable spare parts and accessories are used in any way.
- Do not damage the isolation of the cable. In case of damage, the cable has to be immediately replaced by an authorised service center. Do not operate the appliance with the damaged cable.
- Use your machine by the user's guide shown. Do not use it for any other purpose.
- Unplug your machine before doing any maintenance or before cleaning. Do not leave your machine plugged in.
- Do not touch the cable with wet hands.
- Do not pull the machine by its cable or close door on the cable. Do not move your machine as it will coil the cable.
- Do not let your children play with the machine. Pay attention while operating your machine near children.
- Put on motor shielding filter for all kind of cleaning function.
- Always keep the water filter exhaust clean; so that the carpet cleaner works faultlessly and the suction of the machine remains at max. level.
- Keep the machine away from direct heat such as; stove, oven, etc.
- Do not work near inflammable or explosive fluids or gas. Keep your machine away from burning materials.
- Never vacuum materials at more than 60 C, such as burning cigarettes, ashes, glowing coals, etc.
- Do not use for cleaning materials such as razor-blade, nail and especially do not suck up explosive liquids, acids, oil or solvents which may cause explosions.
- Do not vacuum unhealthy dust.
- This appliance is not intended for use by persons (including children) with reduced physical, sensory or mental capabilities, or lack of experience and knowledge, unless they have been given supervision or instruction concerning use of the appliance by a person responsible for their safety

### PREPARATION FOR WATER FILTRATION



- Unlock the locking latches pulling outwards as shown in the figure.



- Put the motor bonnet away through holding it from carrying handle.



- Put the water filter exhaust inside the tank by pushing it to the suction mouth.



- Fill the tank with water by carefully respecting the exact amount of water indicated on the tank as "MAX WATER LEVEL" as illustrated in the figure. (min. 2,5 lt , max. 3 lt.)



**NOTE: The quantity of the water should not be less than the level indicated on the product with "Max. water level" .**



- Put the motor bonnet back on the tank and lock the latches by pushing right and left.



- Insert the hose by pushing it into the suction mouth.

### WATER FILTRATION



- After connecting the telescopic tube to the hose handle, attach the right choice of accessory to the telescopic tube.



- You can make telescopic tube shorter or longer by pushing switch on the telescopic tube as shown in the figure.



- You can use your machine without any tubes by connecting the right choice of accessory for your vacuuming area directly to the hose handle.

- Plug-in your machine's cable to the power socket

- Operate your machine by using ON-OFF switch.

- Adjust the speed control switch according to the cleaning surface. For curtains minimum level and for carpets or hard floors maximum level is suitable.

**Note:** Shampoo switch should be off while dry vacuuming.



**NOTE:** Never use your machine without water during water vacuuming.

**WARNING:** Detergent residual, from handy cleaning of the carpets and parquetries causes foaming in the tank. In that case immediately switch off the machine and change the water in the tank, otherwise your motor will be damaged by foams.

### ASSEMBLY FOR CARPET SHAMPOO FUNCTION



- Unlock the locking latches pulling outwards as shown in the figure.



- Put the motor bonnet away through holding it from carrying handle.



- Empty your tank if it is full of water.  
**NOTE: Do not put water into your tank for shampoo function.**



**Attention! Remove the water filter exhaust during shampoo function, otherwise it can cause foaming.**



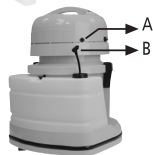
- Put the inner bonnet on the tank.



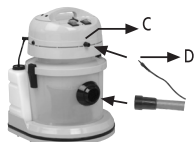
- Put the motor bonnet back on the tank and lock the latches by pushing right and left.



- Fill the shampoo tank with 7 lt. of water and add 3-4 scale of Fantom Shampoo (non-foaming) in it.

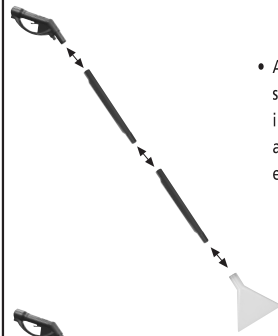


- Insert the pin of the shampoo drawing pipe (B) to its connection place on machine (A) by simply pressing.



- Press thin water hose (D) into the by-pass adaptor (C) in clockwise direction.

### ASSEMBLY FOR CARPET SHAMPOO FUNCTION



- As illustrated in figure, connect elbow tube with spray trigger to the extension tubes by pressing in, and extension tubes to each other. Then attach the carpet shampoo nozzle to the extension tubes.



- Instead of using two extension tubes, you can use your machine with only one tube or without any extension tube by connecting the carpet shampoo nozzle directly to the elbow tube with spray trigger.



- As illustrated in the figure, insert thin water hose into the exquisitely engineered channels.

**NOTE: The channels on the extension tubes should be aligned.**



- Insert the tip end of thin water hose (B) into the junction (A) on the elbow tube with spray trigger, locking in clockwise direction.



- Hard floor and window cleaning function; as illustrated in the figure, insert the hard floor and window nozzle on the carpet shampoo nozzle.

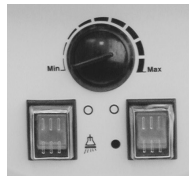


- Upholstery Cleaning function; insert the upholstery shampoo nozzle directly to elbow tube with spray trigger. Insert the tip end of the upholstery shampoo nozzle (B) into the junction (A) on the elbow tube with spray trigger, locking in clockwise direction.



### ASSEMBLY AND CARPET SHAMPOO FUNCTION

- Plug-in your machine's cable to the power socket.



- Operate your machine by using ON-OFF switch.
- Use max. option for the adjustable speed control switch.
- Turn on the switch for shampoo delivery pump.



- As illustrated in the figure, pull the trigger to spray the shampoo water on the floors you want clean.

- Stop pulling the trigger after spraying enough water. This will end water spraying.



- As illustrated in the figure, push back the shampoo nozzle, in order to vacuum dirty water back into the tank.

- Before using shampoo function, check the color resistance of your carpet or armchair etc. in a hidden corner.

### DISASSEMBLY OF THE ACCESSORIES

- Draw back the hose from the suction mouth by pulling.
- Release the by-pass adaptor on motor bonnet through turning the jack of by-pass adaptor into counter clockwise direction (left) .
- Remove the thin water hose on the shampoo tank.
- Release tip end of the thin water hose from the junction in the elbow tube through turning into counter clockwise direction (left).
- If you had used upholstery shampoo nozzle, release the jack of the by-pass adapter in the hose handle with water spraying trigger through turning into counter clockwise direction (left).
- Draw back the thin water hose from the exquisitely engineered channels by pulling.
- Pull the extension tubes and accessories to release.

### PRECAUTIONS FOR CARPET CLEANING FUNCTION

- Always use the original and non-foaming carpet cleaning shampoo. The warranty is not valid if unsuitable spare parts or carpet cleaning shampoo are used in any way.
- Do not leave water residual shampoo or dirty water in the tank.  
**NOTE: This will cause bad smell.**
- Certainly turn off the pump switch when water with shampoo is finished.

### ASSEMBLY FOR WET VACUUMING FUNCTION



- Unlock the locking latches pulling outwards as shown in the figure.
- Put the motor bonnet away through holding it from carrying handle.
- Empty your tank if it is full of water.  
**NOTE: Do not put water into your tank for wet vacuuming function.**
- Take the motor filter exhaust out of the tank.

### ASSEMBLY FOR WET VACUUMING FUNCTION



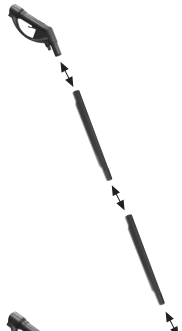
- Put the motor bonnet back on the tank and lock the latches by pushing right and left.



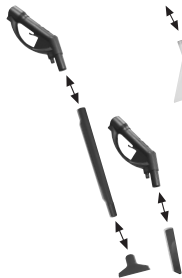
- Insert the hose by pushing it into the suction mouth.



- After connecting the tubes to each other and to the spray trigger, attach the right choice of accessory for your wet vacuuming area.



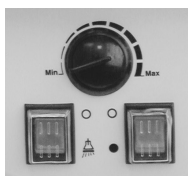
- Instead of using two extension tubes, you can use your machine with only one tube or without any extension tubes by connecting the carpet shampoo nozzle directly to the elbow tube with spray trigger.



**NOTE:** Do not use inner bonnet and water filter exhaust for wet vacuuming function.

- Plug-in your machine's cable to the power socket.

### ASSEMBLY FOR WET VACUUMING FUNCTION



- Operate your machine by using ON-OFF switch.
- Use max. option for the adjustable speed control switch.

**NOTE:** Turn off the pump while using switch for wet vacuuming function.

- If the place is so deep for wet vacuuming function, do not dip all of the accessory so as not to block air circulation. If the liquid is on a smooth area, use wet vacuuming function with your suitable accessory by moving forward and backward

**ATTENTION!** For wet vacuuming function, there should not be any accessory plugged on the tank.

### ASSEMBLY FOR DRY VACUUMING FUNCTION WITH PAPER DUSTBAG AND CLOTH DUSTBAG



- Unlock the locking latches pulling outwards as shown in the figure.



- Put the motor bonnet away through holding it from carrying handle.



- Lock the paper dustbag to the clips which are on the back side of the suction mouth.  
**NOTE:** Always keep a reserve of paper dustbag, so that the vacuum cleaner will be ready for use at any time.



- Put the cloth dustbag into the tank as shown in the figure.



**NOTE:** While using dry vacuuming function, use cloth and paper dustbag together.

### ASSEMBLY FOR DRY VACUUMING FUNCTION WITH PAPER DUSTBAG AND CLOTH DUSTBAG



- Put the motor bonnet back on the tank through holding it from carrying handle and lock the latches by pushing right and left.



- Insert the flexible hose into the suction mouth.
- Put the hose into the suction mouth and choose the right choice of accessory for dry vacuuming function. Clean the surface by moving the accessory forward and backward

### USAGE OF AIR FILTRATION UNIT



- Unlock the locking latches pulling outwards as shown in the figure.



- Put the motor bonnet away through holding it from carrying handle.



- Put the water filter exhaust inside the tank by pushing it to the suction mouth.



- Fill the tank with water by carefully respecting the exact amount of water indicated on the tank as "MAX WATER LEVEL" as illustrated in the figure. (min 2,5 lt. , max 3 lt. )



**NOTE:** The quantity of the water should not be less than the level indicated on the product with "max. water level" .

### USAGE OF AIR FILTRATION UNIT



- Put 4-5 drops of "Phantom room perfume" to sponge filter



- Put the motor bonnet back on the tank and lock the latches by pushing right and left.

- Plug-in your machine's cable to the power socket.

- Operate your machine by using ON-OFF switch.

- Use min. option for the adjustable speed control switch.



- **NOTE: Turn off the pump switch for air filtration unit. Before operating your machine, none of the accessories should not be plugged-in to the suction mouth.**

### MAINTENANCE AND CLEANING

- Do not leave anything in the machine such as dirt, dust and liquid as they can damage the metal parts of the motor. Empty the tank after each function, **NOTE: To prevent bad odors, don't leave any liquid in the tank. Clean and keep empty the tank after each operation.**

- After wet vacuuming function, dry tubes, hose and parts of the motor properly. After filling out and drying the tank, operate the machine for a few minutes in order to prevent bad odors.

- Do not wash the motor bonnet and do not put it in water. Only clean it by mopping.



- Clean the tank by mopping or washing.



- Clean the accessories by mopping or washing.

Change the paper and cloth dustbag with a new one when it gets full. From time to time water filter exhaust should be cleaned to ensure higher performance. You can wash sponge filters when they get dirty

### TECHNICAL SPECIFICATIONS

TYPE W 11-1

Nominal Voltage : 220-230 V AC      Net Weight : 12 kg

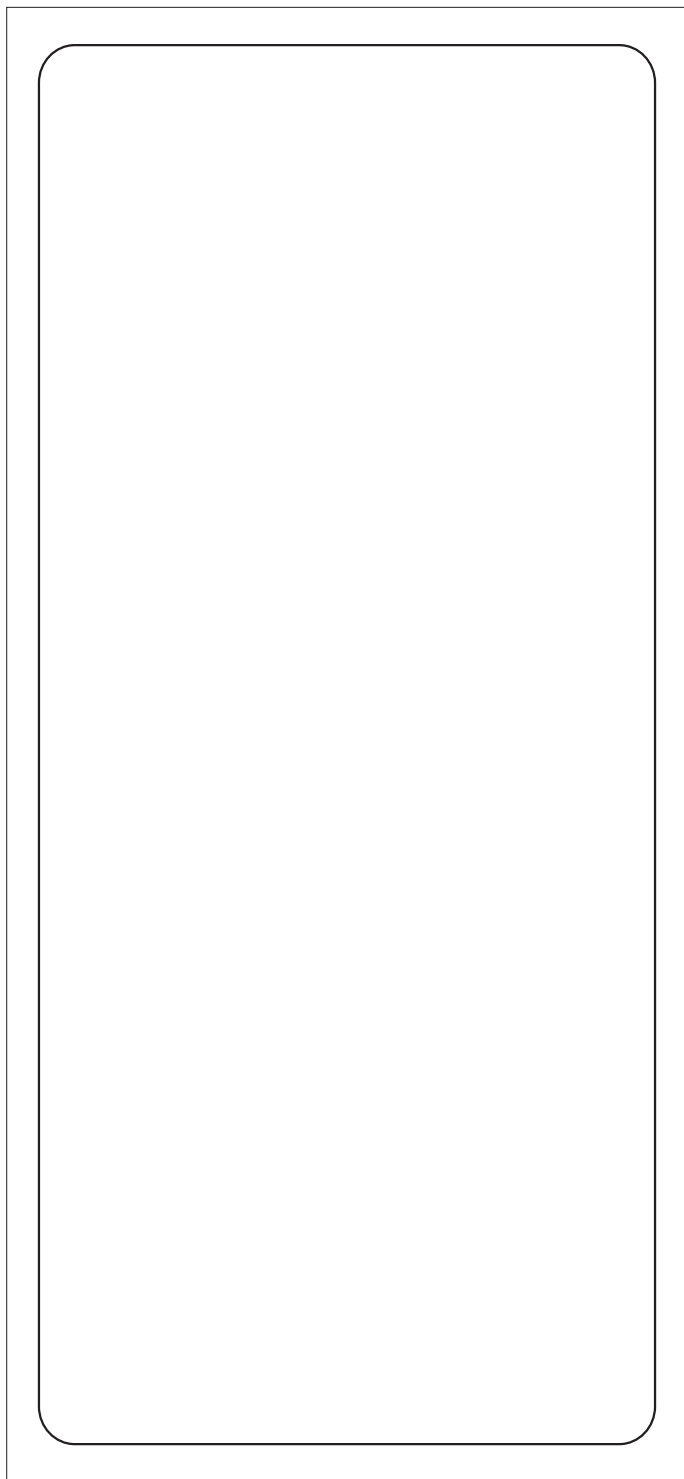
Nominal Frequency : 50/60 Hz      IPX4

Power : 2400 W.



**RoHS**  
2002/95/EC

15





ELEKTRİKLİ EV ALETLERİ SAN. VE TİC. LTD. ŞTİ.  
Merkez Mah. Şehit Yılmaz Özdemir Cad. Sönmez Sok. No:8/1 34303  
Halkalı-İstanbul-Türkiye  
Tel: +90212 697 57 70 (pbx) • Fax:+90212 548 98 78  
[www.fanset.com](http://www.fanset.com) - [export@fanset.com](mailto:export@fanset.com)